



Defender Holiday Inn Express Classic

Saturday, September 8, 2018

Women race @ 10:00 AM and Men @ 10:40 AM

Location: Dordt College Prairie (on the campus of Dordt College)

Course: The course is a 1.5-1.65 mile grass loop that is located on Dordt College's Campus. The course has rolling elevation change with good footing and broad corners designed with quality cross-country racing in mind. It is located directly south of the campus buildings in the area known as the Dordt College Prairie. Bus parking will be in the lot located south of the Sioux Center/Dordt College football/track complex

Course Records: Women's 5K: Michelle Mumm (2018) – Morningside College – 17:47
Men's 8K: Jeremiah Panec (2018) – Dakota Wesleyan University – 24:56

Entry Procedure: Online entries via Direct Athletics. Registration opens Sunday, August 26th

Entry Deadline: Registration closes Wednesday, September 5 @ Midnight

Entry Fee: \$100 per men's team & \$100 per women's team. \$20 per unattached athlete.

Entry Limitations: None

Packets: Packets will be available at the course on the day of the competition.

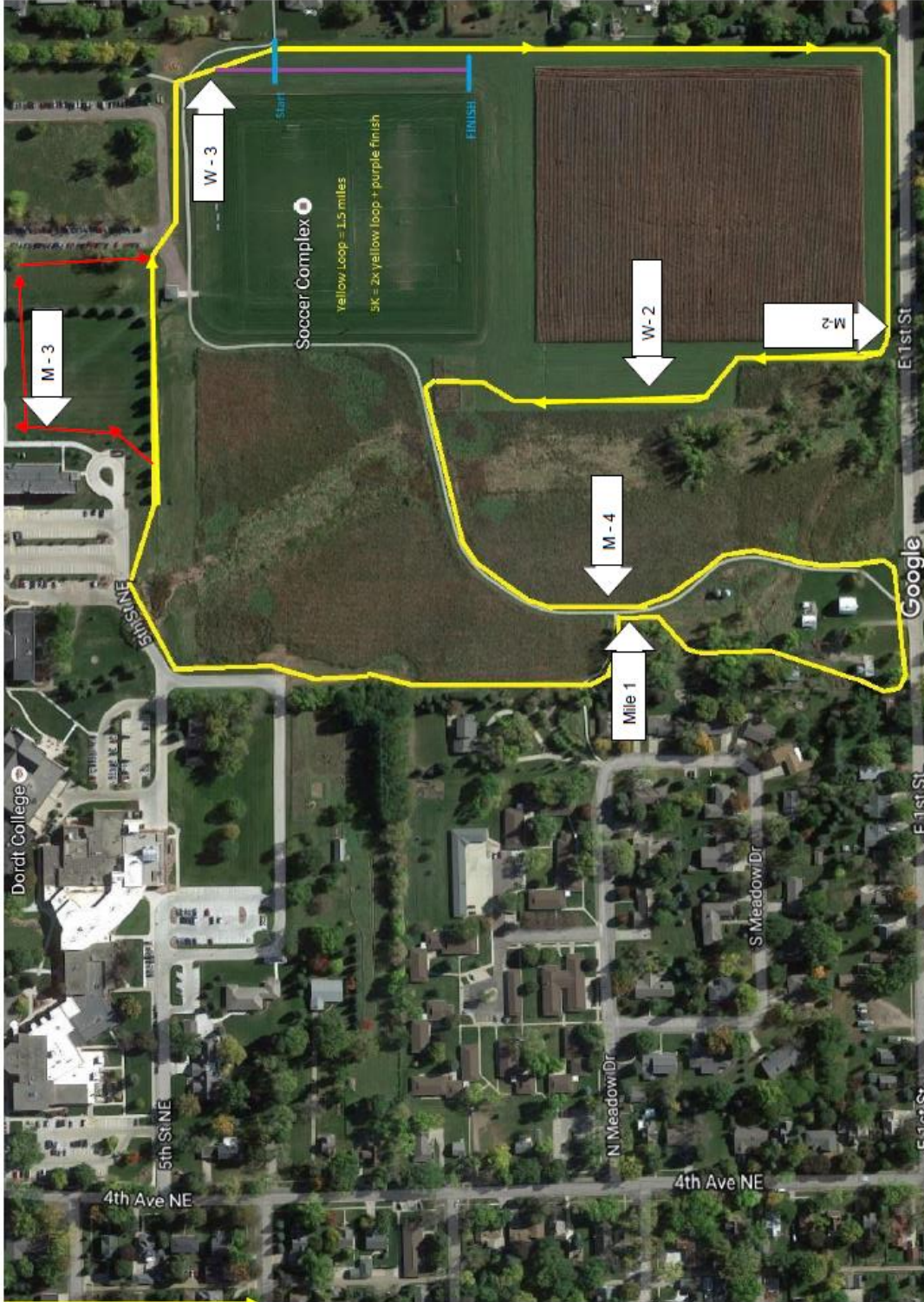
Awards: T-shirts to top 10 men and top 10 women collegiate finishers

Results: Results will be available online

Course Markings: The course is well marked with natural barriers, flags, and paint. Mile and kilometer marks are clearly indicated.

Toilets: Portable toilets will be located near the starting and finish line area.

Dressing Facilities: The public locker room in the Recreation Center (400m from start line) will be available for athletes both before and after the races.



- Women's 5K is 2 x Yellow Loop + purple finish
- Men's 8K is 3 x Yellow Loop w/Red addition + purple finish.



DORDT COLLEGE CAMPUS MAP

